

Northeast Wisconsin Technical College

# ANNUAL REPORT



 **Northeast**  
Wisconsin Technical College

2010-2011



## LETTER FROM THE PRESIDENT



Dear investors,

It is my pleasure to present the NWTC Annual Report for 2010-2011. Despite the tumult and change, Northeast Wisconsin Technical College managed to maintain its focus on meeting the needs of the students and communities it serves.

Often, we have met those needs by increasing access and opportunities. We use technology and outreach locations to reach more students. New facilities like the NWTC Northwoods Regional Learning Lab in Wausaukee and the Computer Integrated Manufacturing Mobile Lab bring advanced technology to rural areas. New degree programs in Gerontology, Marine Construction, Marine Engineering Technology, Enology and Viticulture provide inroads to industries with strong job potential. Yet access and opportunity are no longer enough.

Increasingly, what employers need—what we all need—are more graduates, whose complete, flexible skill set helps businesses remain competitive. Our future depends on our ability to help more people stay in school and graduate. This year, the College intensified its focus on student success, defined as course mastery, persistence in school, and attainment of credentials. Staff mined years of data and conducted new research to find out where students fail and why they succeed. We have already implemented mandatory orientation, new student financial tools, new basic academic courses, phone calls to non-returning students, and more changes are on the way. The people who enroll at NWTC have already made a significant positive choice; we are here to make their journey easier and ensure their progress.

In recognition, NWTC has been identified by the Aspen Institute as one of the top 10 percent of colleges in the United States for promoting student success. NWTC was the only Wisconsin college to be named among these “Achieving the Dream” colleges. Through Achieving the Dream, what we are learning at NWTC may be used nationwide by other colleges to help other students achieve their dreams as well.

NWTC is committed to keeping people out of poverty, in the workforce and thriving. It is our mission and our passion, and we could not do it without you. Thank you for your support, and please let us know if there is a way we can help you or someone you know achieve their dreams.

Sincerely,

A handwritten signature in black ink, appearing to read "H. Jeffrey Rafn". The signature is fluid and cursive, with a large initial "H" and a stylized "Rafn".

Dr. H. Jeffrey Rafn, President



## CELEBRATING 100 YEARS OF EDUCATION



## OUR MISSION AND VISION

### OUR VISION

NWTC will provide the highest quality, life-long learning opportunities that are

- what you want
- when you want
- where you want, and
- how you want them

so you may continue your learning and successfully engage in a career that enhances your quality of life in a global community.

### OUR MISSION

We are a two-year technical college, serving Northeast Wisconsin by providing education, training, and lifelong learning opportunities for individuals and businesses leading to the development of a skilled workforce.

Our customers stimulate the economic vitality of our district as a result of the application of skills and knowledge acquired through the completion of certificates, degrees, diplomas, and courses.



## 2010-2011 BOARD OF TRUSTEES

**Tony Vanderbloemen**

*Chairperson*

Brown/Outagamie Counties

**Ben Villarruel**

*Vice Chairperson*

Brown/Outagamie Counties

**John C. Gower**

*Secretary*

Brown/Outagamie Counties

**Laurene DeWitt Davidson**

*Treasurer*

Marinette County

**Phyllis Habeck**

Shawano County

**Carla J. Hedtke**

Oconto County

**David Mayer**

Kewaunee/Manitowoc  
Counties

**Jeff Rickaby**

Florence County

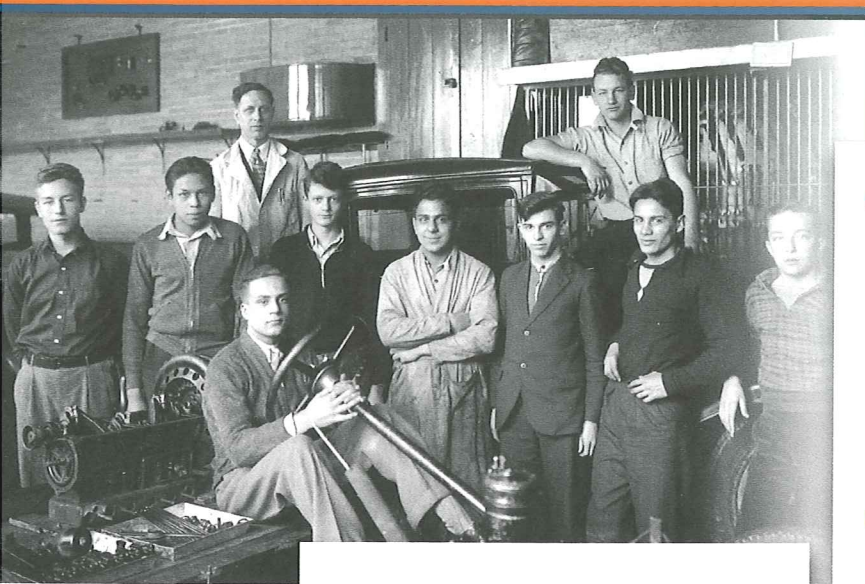
**Gerald Worrick**

Door County

## IN MEMORIAM

*In memory of John Gower (1941-2011) and in grateful appreciation for the volunteer service of our District Board members, past and present*





- For 100 years, NWTC has helped to start and advance the careers of thousands of Northeast Wisconsin residents.

- NWTC offers over 100 associate degrees, technical diplomas, and apprenticeships, plus 98 certificates.

- In 2011, NWTC was ranked in the top 10 percent of community colleges nationwide for promoting student success by the Aspen Institute.



## DID YOU KNOW?

The College hosts International students from all over the world and provides local study abroad experiences annually.

**NWTC IS THE ONLY ACHIEVING THE DREAM COLLEGE IN WISCONSIN.**



## COLLEGE – IMPRESSIVE FACTS – 2012



### DID YOU KNOW?

NWTC has awarded more than 50,000 degrees and diplomas since 1968.

- Each year NWTC serves over 40,000 students who are preparing to enter the workforce, change careers, gain high-tech new skills, start businesses, or meet personal or workplace goals.

- NWTC SERVED 1,084 BUSINESSES in 2010-2011 with customized training either at their site or in the classroom, training 20,083 employees.
- 2,640 STUDENTS GRADUATED from NWTC in 2010-2011.
- 89 PERCENT OF 2011 GRADUATES available for employment were employed six months after graduation, and 79 percent of those had jobs in their field of study.
- 96 PERCENT OF 2011 EMPLOYED GRADUATES WORK IN WISCONSIN, and 75 percent work right here in the district.

- NWTC's 2011 associate degree graduates were earning a median salary of \$36,085 six months after graduation.

### GIVE THE GIFT OF EDUCATION

- More than \$1 million in scholarships has been awarded to 1,614 students since 2007.

### FOR MORE INFORMATION ON GIVING OPPORTUNITIES:

Crystal Harrison, Director  
NWTC Educational Foundation —  
(920) 498-5541  
[crystal.harrison@nwtc.edu](mailto:crystal.harrison@nwtc.edu)

Follow our celebration at [WWW.NWTC.EDU/100YEARS](http://WWW.NWTC.EDU/100YEARS)

# 2010-2011 FINANCIAL RESULTS

## NWTC

### 2010-11 Financial Results

#### Revenue

(Unduplicated) - All Funds

Tax Levy	\$59,079,805	48.0%
State Aids	15,243,555	12.4%
Federal Grants	16,796,053	13.6%
Student Program Fees	15,727,059	12.8%
Student Material Fees	982,808	0.8%
Other Student Fees	2,061,115	1.7%
Auxiliary Enterprise Revenues	7,653,154	6.2%
Business & Industry Contracts	3,094,002	2.5%
School District Contracts	105,750	0.1%
Miscellaneous	2,243,156	1.8%
Investment Income	182,361	0.1%

**Total Revenues** **\$123,168,818** **100.0%**

Percentage change from FY2009-10: 3.0%

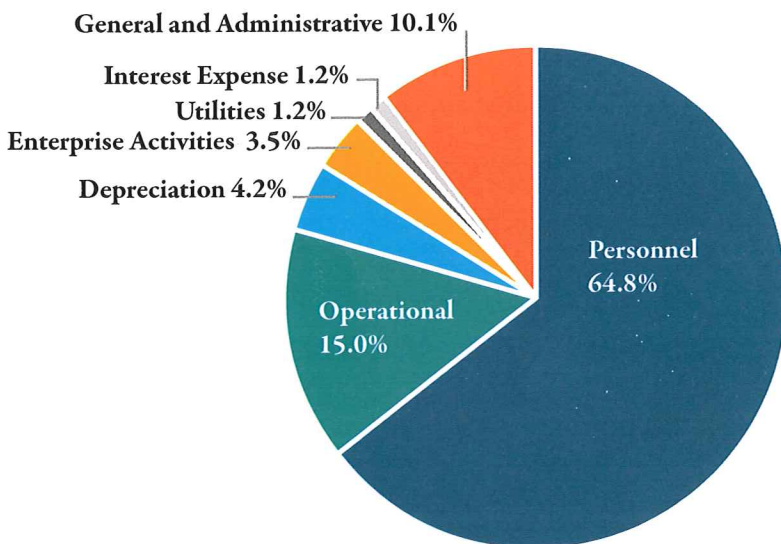
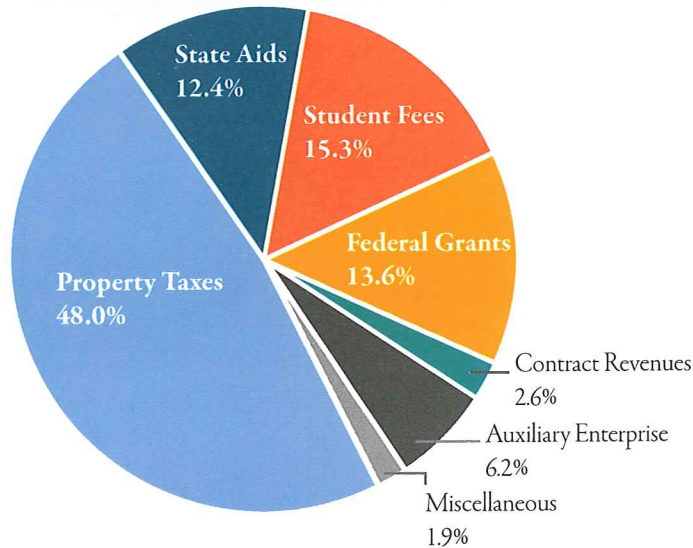
#### Expenses

(Unduplicated) - All Funds except capital project expenditures

Salaries, Wages & Benefits	\$76,341,771	64.8%
Travel, Memberships & Subscriptions	1,462,808	1.2%
Supplies, Printing & Minor Equipment	6,832,810	5.8%
Contract Services	7,270,267	6.2%
Rentals, Repairs & Maintenance	2,161,239	1.8%
Credit	710,233	0.6%
Enterprise Activities	4,080,254	3.5%
Insurance	281,867	0.2%
Utilities	1,439,345	1.2%
Depreciation	4,994,663	4.2%
Student Aid	10,884,117	9.3%
Interest Expense	1,349,365	1.2%
<b>Total Expenses</b>	<b>\$117,808,739</b>	<b>100.0%</b>

Percentage change from FY2009-10:

"NOTES: Capital project expenditures were \$9,954,038"





## 2010-2011 BENCHMARKS

### NWTC is the 4th-largest of Wisconsin's Technical Colleges

NWTC served 7,570 (FTE) students in 2010-2011, the 4th-largest total in the WTCS. They included degree and diploma students, adults changing careers, employees and employers advancing their skills, and community members improving their quality of life. NWTC also granted the third-largest number of degrees, with 2,653.

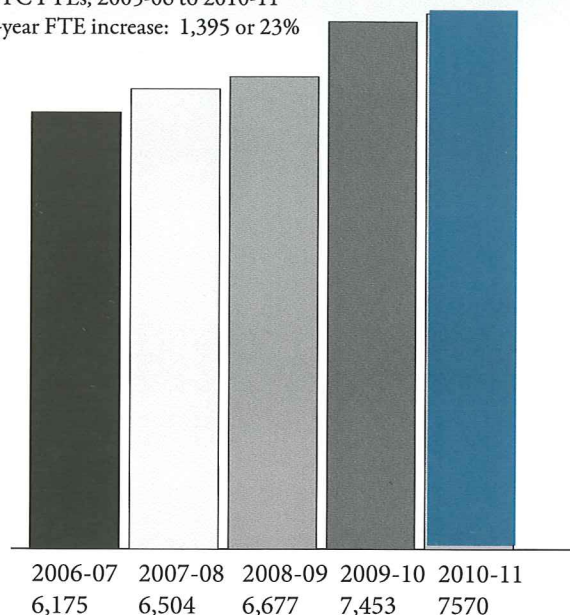
### Cost per student is 5th lowest in Wisconsin

NWTC's operational cost per student is 5th-lowest in the WTCS—\$11,742 compared to a state average of \$13,010. Change from 5 years ago: \$200 or less than 1.8%, despite the increase in offerings and services.

*Sources: Cost Allocation Report and Full Time/Part Time Enrollments By Program Aid Code, WTCS Office.*

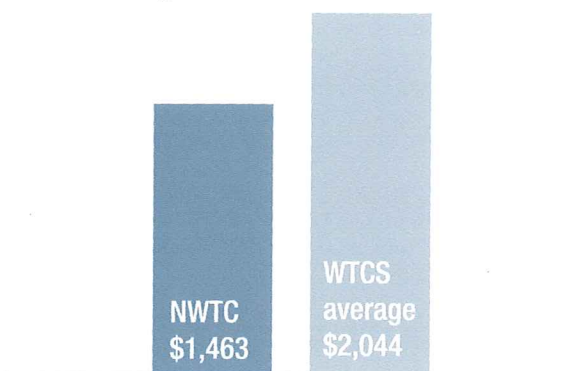
### Number of FTE students continues to rise

NWTC FTEs, 2005-06 to 2010-11  
Five-year FTE increase: 1,395 or 23%



### NWTC tax levy is the 2nd lowest in the state

NWTC tax levy per person .....\$1,463  
WTCS average .....\$2,044



*Source: Mill Rate and Total Tax Levy, WTCS Office*

### NWTC operating mill rate is still the 4th lowest in the state

NWTC operating mill rate .....\$1.19  
WTCS operating mill rate average .....\$1.30



*Source: Mill Rate and Total Tax Levy, WTCS Office*



*100 years of great careers*



*Success for the past century  
and the next*



**Green Bay Campus**

2740 W. Mason St. P.O. Box 19042  
Green Bay, WI 54307-9042  
(920) 498-5444

**Marinette Campus**

1601 University Dr.  
Marinette, WI 54143  
(715) 735-9361

**Sturgeon Bay Campus**

229 N. 14th Ave.  
Sturgeon Bay, WI 54235  
(920) 746-4900

**CELEBRATING 100 YEARS OF EDUCATION**