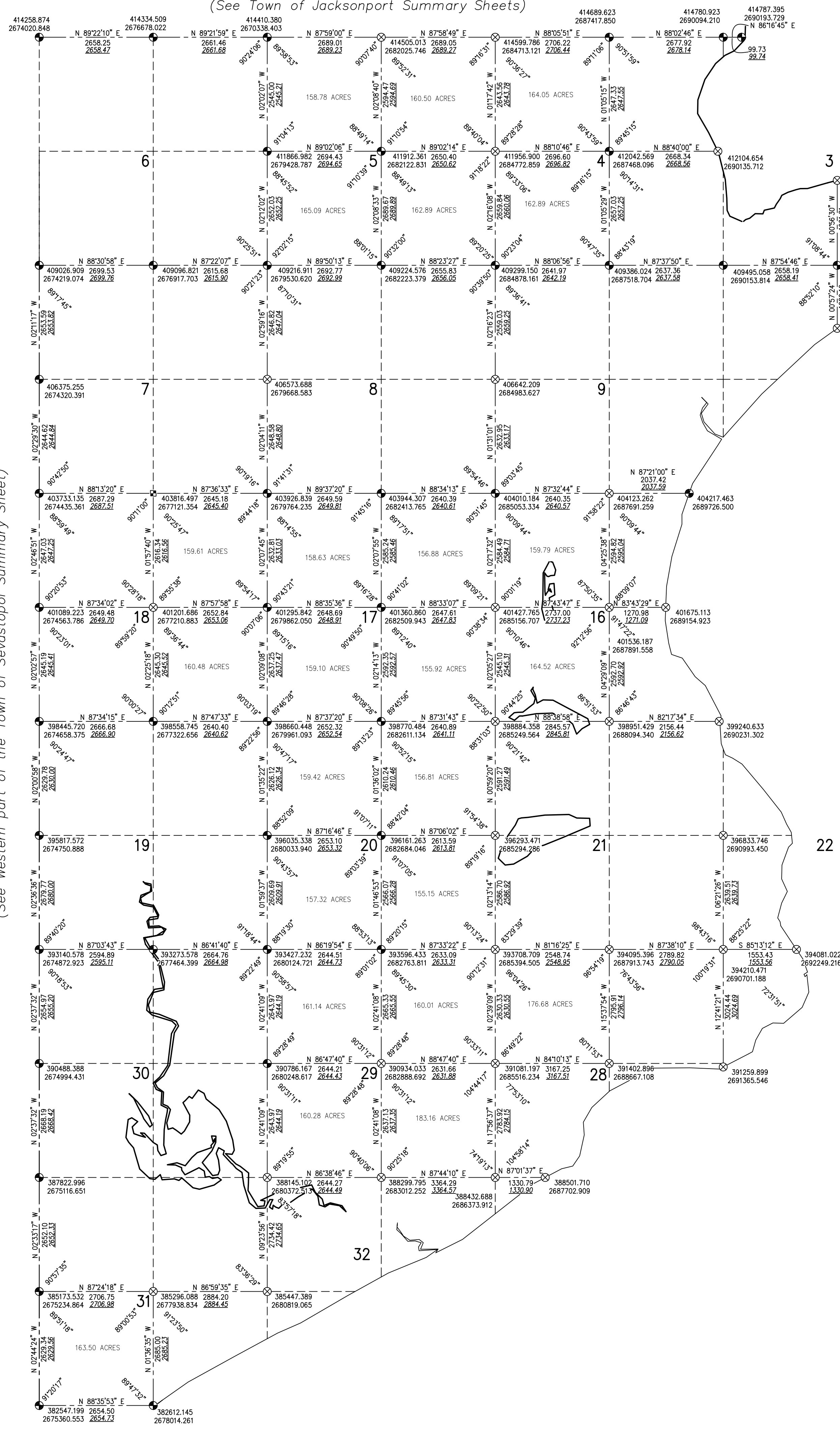


(See Western part of the Town of Sevastopol Summary Sheet)



| | |
|----------------------------|--------------------------|
| DRAWN BY: P. A. SPETZ | DATE: FEB. 2001 |
| CHECKED BY: M. G. MC CARTY | DATE: FEB. 2001 |
| APPROVED BY: J. S. BAUDHUN | DATE: FEB. 2001 |
| REVISED: M. G. MC CARTY | DATE: JUNE 2001/AUG 2014 |
| REVISED: | DATE: |

CONTROL SURVEY SUMMARY DIAGRAM FOR
TOWN OF SEVASTOPOL
 TOWN 28 NORTH - RANGE 27 EAST
 DOOR COUNTY, WISCONSIN

HORIZONTAL DATUM IS BASED ON THE WISCONSIN STATE PLANE COORDINATE SYSTEM GRID. CENTRAL ZONE, AND ALL BEARINGS ARE REFERRED TO GRID NORTH. DIMENSIONS SHOWN IN ITALICS AND UNDERLINED INDICATE GROUND LEVEL DISTANCES. GROUND LEVEL DISTANCES ARE SCALED USING THE AVERAGE COMBINATION FACTOR FOR EACH LINE.

● U.S. PUBLIC LAND SURVEY CORNER MARKED BY BERNSEY ALUMINUM MONUMENT WITH 4" ALUMINUM CAP - DOOR COUNTY MONUMENT
 ⊗ U.S. PUBLIC LAND SURVEY CORNER (SURVEYED USING GPS AND CONVENTIONAL METHODS)
 ▲ U.S. PUBLIC LAND SURVEY CORNER (NAIL PK, MAG OR CONCRETE)
 ⊙ U.S. PUBLIC LAND SURVEY CORNER, REBAR
 ⊕ U.S. PUBLIC LAND SURVEY CORNER, IRON PIPE