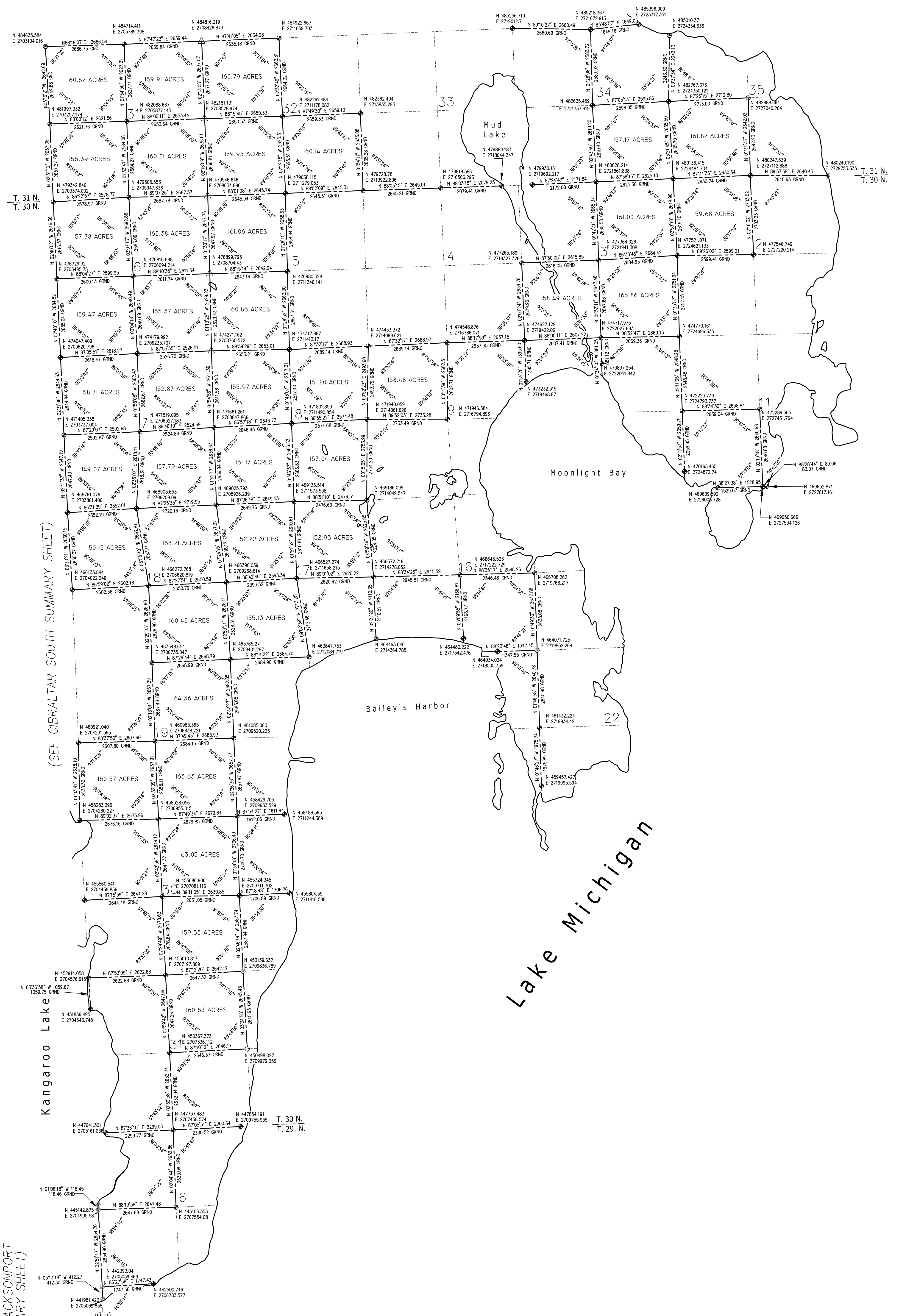


(SEE GIBRALTAR NORTH SUMMARY SHEET)

(SEE GIBRALTAR SOUTH SUMMARY SHEET)



(SEE JACKSONPORT SUMMARY SHEET)

- ◆ U.S. PUBLIC LAND SURVEY CORNER MARKED BY BERTSIN ALUMINUM MONUMENT WITH 4" ALUMINUM CAP - DOOR COUNTY MONUMENT
- ◆ (SAME AS ABOVE - FROM PREVIOUS CONTROL SURVEYS)
- △ U.S. PUBLIC LAND SURVEY CORNER, NAIL
- △ U.S. PUBLIC LAND SURVEY CORNER, STONE MON.
- ⊙ U.S. PUBLIC LAND SURVEY CORNER, REBAR
- ⊙ U.S. PUBLIC LAND SURVEY CORNER, IRON PIPE

HORIZONTAL DATUM IS BASED ON THE WISCONSIN STATE PLANE COORDINATE SYSTEM GRID. CENTRAL ZONE AND ALL BEARINGS ARE REFERRED TO GRID NORTH

DIMENSIONS SHOWN ARE GEODETIC (GRID) DISTANCES FOLLOWED BY "GRND" INDICATE GROUND LEVEL DISTANCES

GROUND LEVEL DISTANCES ARE SCALED USING THE AVERAGE COMBINATION FACTOR FOR EACH LINE

CONTROL SURVEY SUMMARY DIAGRAM
FOR
TOWN OF BAILEY'S HARBOR
TOWN 30 NORTH - RANGE 28 EAST
PART OF TOWN 31 NORTH - RANGE 28 EAST
DOOR COUNTY, WISCONSIN

DRAWN BY: P. A. SPETZ	DATE: MAR. 2002
CHECKED BY: M. G. MC CARTY	DATE: MAR. 2002
APPROVED BY: J. S. BAUDHUIJN	DATE: MAR. 2002
REVISED: M. G. MC CARTY	DATE: FEB. 2014
REVISED:	DATE:

DOSSER SHEETS CONTAINING ALL INFORMATION NECESSARY FOR RECOVERY AND USE OF CONTROL SURVEY STATIONS AVAILABLE FROM DOOR COUNTY.