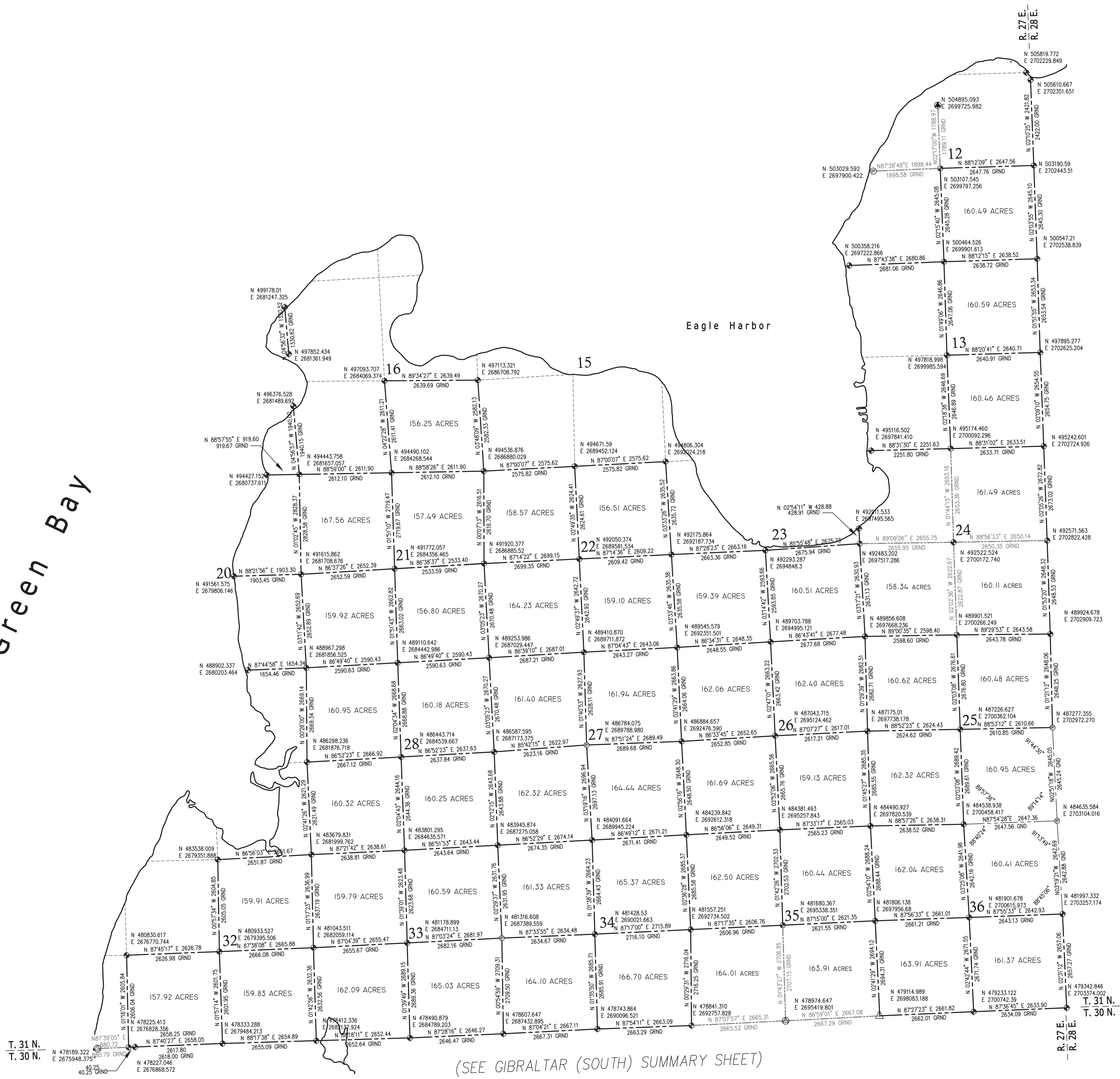


Green Bay



(SEE GIBRALTAR (SOUTH) SUMMARY SHEET)

(SEE BAILEY'S HARBOR SUMMARY SHEET)

CONTROL SURVEY SUMMARY DIAGRAM FOR

# TOWN OF GIBRALTAR (NORTH)

TOWN 31 NORTH - RANGE 27 EAST  
DOOR COUNTY, WISCONSIN

DRAWN BY: P. A. SPETZ	DATE: FEB. 2002
CHECKED BY: M. G. MC CARTY	DATE: MAR. 2002
APPROVED BY: J. S. BAUDHUIN	DATE: MAR. 2002
REVISED: M. G. MC CARTY	DATE: FEB. 14
REVISED: M. G. MC CARTY	DATE: JAN. 2018

HORIZONTAL DATUM IS BASED ON THE WISCONSIN STATE PLANE COORDINATE SYSTEM AND CENTERED TO GRID NORTH. BEARINGS ARE REFERRED TO GRID NORTH.

DIMENSIONS SHOWN ARE GEODETIC (GRID) DIMENSIONS INCLUDING GRID AROUND LEVEL DISTANCES.

GROUND LEVEL DISTANCES ARE SCALED USING THE AVERAGE CORRECTION FACTOR FOR EACH LINE.

U.S. PUBLIC LAND SURVEY CORNER MARKED BY BRENSSEN ALUMINUM MONUMENT WITH ALUMINUM CAP - DOOR COUNTY MONUMENT

U.S. PUBLIC LAND SURVEY CORNER, IRON PIPE

U.S. PUBLIC LAND SURVEY CORNER, NAIL

U.S. PUBLIC LAND SURVEY CORNER MARKED BY 2" ALUMINUM MONUMENT

U.S. PUBLIC LAND SURVEY CORNER MARKED BY 3" MAG BRASS DOOR COUNTY MONUMENT

DOSSER SHEETS CONTAINING ALL RECOVERY AND USE OF CONTROL SURVEY STATIONS AVAILABLE FROM DOOR COUNTY.