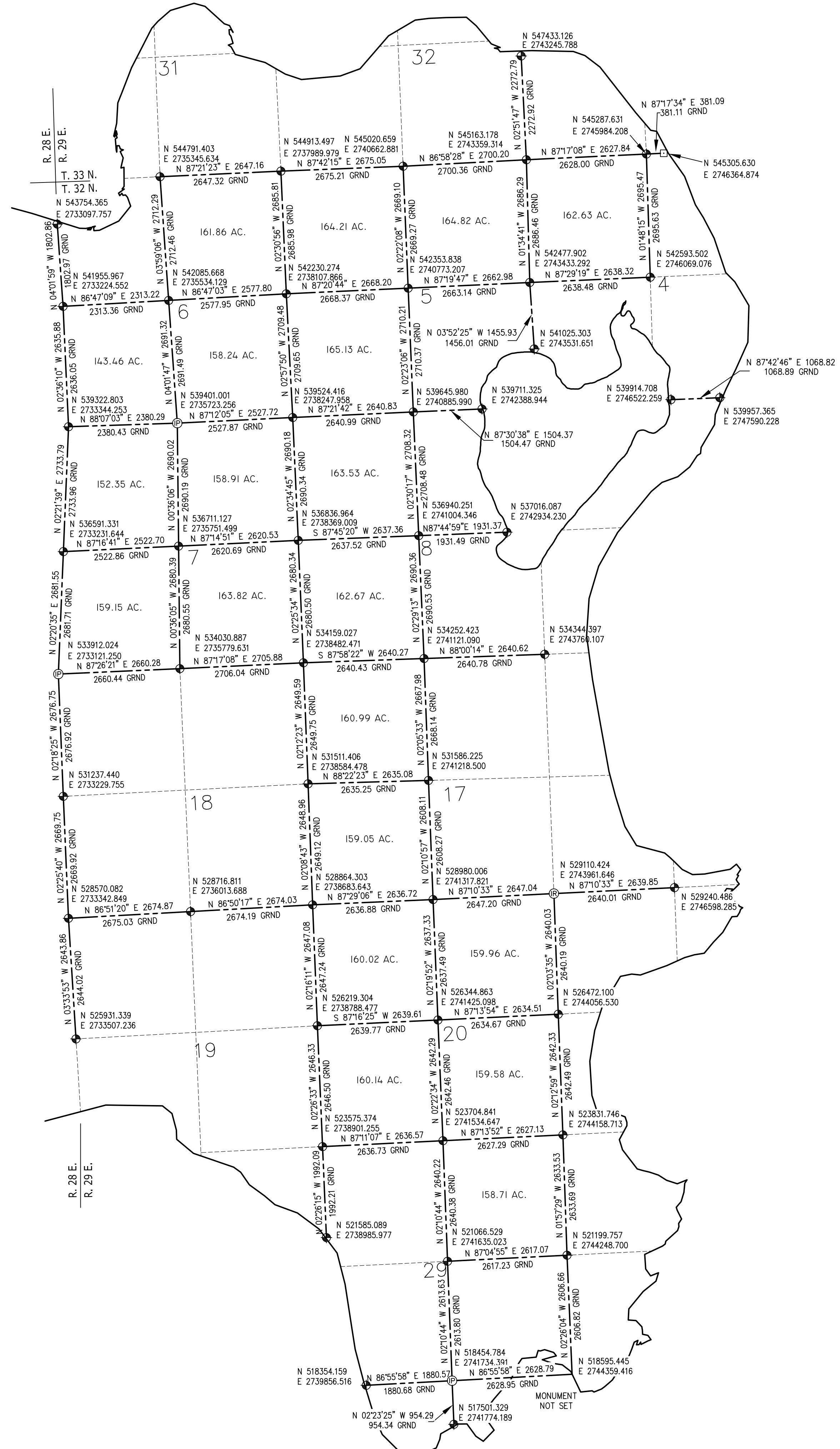


(see Liberty Grove Central Summary Sheet)



CONTROL SURVEY SUMMARY DIAGRAM
FOR
TOWN OF LIBERTY GROVE-EAST
TOWN 32 AND 33 NORTH - RANGE 29 EAST
DOOR COUNTY, WISCONSIN

DRAWN BY: P. A. SPETZ	DATE: JUNE 2002
CHECKED BY: M. G. MC CARTY	DATE: JUNE 2002
APPROVED BY: J. S. BAUDHUIN	DATE: JUNE 2002
REVISED: M. G. MC CARTY	DATE: DEC. 2002
REVISED:	DATE:

HORIZONTAL DATUM IS BASED ON THE WISCONSIN STATE PLANE COORDINATE SYSTEM. GRID, CENTRAL ZONE, AND ALL BEARINGS ARE REFERRED TO GRID NORTH. DIMENSIONS SHOWN ARE GEODETIC (GRD) DISTANCES FOLLOWED BY "GRND" ARE GROUND LEVEL DISTANCES. GROUND LEVEL DISTANCES ARE SCALED USING THE AVERAGE COMBINATION FACTOR FOR EACH LINE.

U.S. PUBLIC LAND SURVEY CORNER MARKED BY BRASSY NAIL, WOOD COUNTY MONUMENT
 4" ALUMINUM CAP - DOOR COUNTY MONUMENT
 U.S. PUBLIC LAND SURVEY CORNER
 U.S. PUBLIC LAND SURVEY CORNER, IRON ROD
 U.S. PUBLIC LAND SURVEY CORNER, IRON PIPE
 MONUMENT NOT SET

DOSSER SHEETS CONTAINING ALL RECOVERY AND USE OF CONTROL SURVEY STATIONS AVAILABLE FROM DOOR COUNTY.