

## Conservation Map Goals

A set of targeted land use management and planning goals, specific to Door County were identified by local and regional advisors. Each goal has been characterized using best available data, scientific review, and advanced analysis. The maps, reports, and interactive tools on this website will enable you to identify and explore locations of highest concern for each goal.

1. Protect Habitat for Native Plants and Animals

### 2. Restore Landscape Connectivity

3. Protect Surface Water Quality

4. Protect Ground Water Quality

## How the Goal Map “Restore Landscape Connectivity” was Created

Each goal map is a composite of a number data layers known as “metrics” or “criteria”. The criteria data layers were created in consultation with the Door County Greenprint Technical Advisory Team comprised of resource experts and water scientists from Door County and across the region. For detailed information on data and methodology used to create the criteria layers, refer to the last page of this document.

The composite map for each goal was created by combining the criteria data layers using a “weighted overlay” process. The Technical Advisory Team was responsible for determining a relative weight for each criterion layer, based on their knowledge of the subject areas and the datasets. The rationale that was used for assigning a higher or lower weight to a specific criterion included:

- Importance of that criterion for meeting the goal
- Quality or currency of the data used in the model
- Comprehensiveness of the data or modeling process

The following table summarizes the criteria layers considered for the goal and the relative weights used in the overlay process to create the composite goal map.

Goal	Criteria	Weight
Restore Landscape Connectivity		
	Connectivity Supporting Movement of Wildlife	100%
	<b>TOTAL</b>	<b>100%</b>

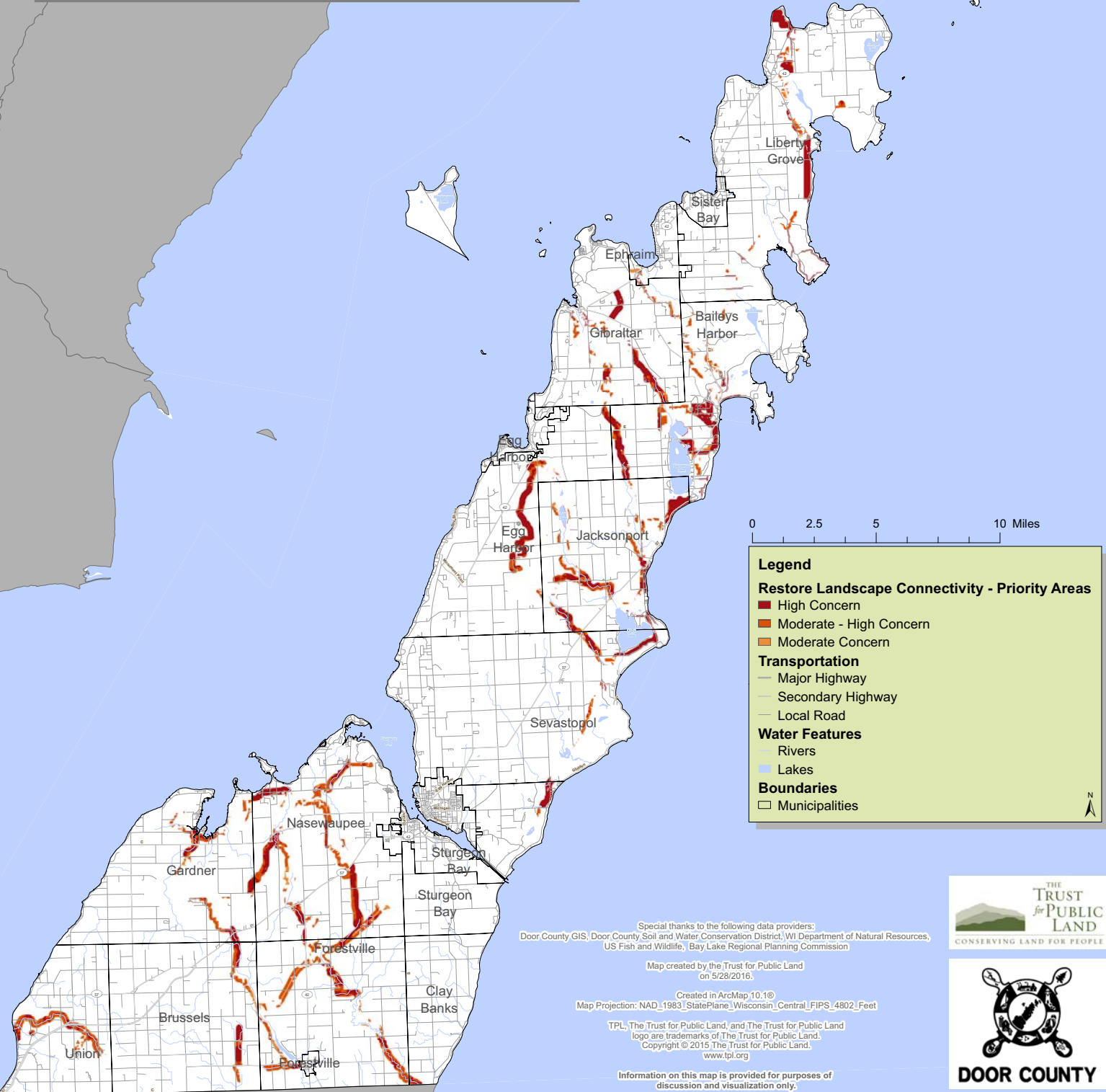
### *Rationale:*

- *There was only a single criterion in this Greenprint Goal. The Connectivity for Wildlife Movement required a complex model that considered a host of factors such as natural land “hubs” for habitat, riparian corridors, canals, shoreline, trails, landcover disturbance, currently protected areas, and barriers such as paved roads and urban areas.*

# Door County Greenprint Goal: Restore Landscape Connectivity

This map displays the results of Restore Landscape Connectivity, a resource protection goal within the Door County Greenprint. The degree of priority for each area is represented with a color scale with dark red representing areas of highest concern and orange representing areas of moderate concern.

There was only a single criterion in this Greenprint Goal. The evaluation of Connectivity Supporting Wildlife Movement required a complex model that considered a host of factors such as natural land "hubs" for habitat, riparian corridors, canals, shoreline, trails, landcover disturbance, currently protected areas, and barriers such as paved roads and urban areas.



0 2.5 5 10 Miles

**Legend**

**Restore Landscape Connectivity - Priority Areas**

- High Concern
- Moderate - High Concern
- Moderate Concern

**Transportation**

- Major Highway
- Secondary Highway
- Local Road

**Water Features**

- Rivers
- Lakes

**Boundaries**

- Municipalities

Special thanks to the following data providers:  
Door County GIS, Door County Soil and Water Conservation District, WI Department of Natural Resources,  
US Fish and Wildlife, Bay Lake Regional Planning Commission

Map created by the Trust for Public Land  
on 5/28/2016.

Created in ArcMap 10.1®  
Map Projection: NAD\_1983\_StatePlane\_Wisconsin\_Central\_FIPS\_4802\_Feet

TPL, The Trust for Public Land, and The Trust for Public Land logo are trademarks of The Trust for Public Land.  
Copyright © 2015 The Trust for Public Land.  
www.tpl.org

Information on this map is provided for purposes of discussion and visualization only.





## Door County Greenprint Model

Model Criteria  
March 11, 2015

Goal	Criteria	Methodology	Data	Data Sources	Data Confidence (High, Med, Low)
Restore Landscape Connectivity					
	Connectivity Supporting Movement of Wildlife	<p>This model identifies critical wildlife corridors that make connections between large unfragmented blocks (500 acres or greater) of natural wildlife habitat. Corridors are 1/4 mile wide. The following "costs" were considered when modeling best connections (Note: the lower the cost, the more attractive for wildlife movement).</p> <p>Preferred corridors (order by most preferred to least preferred):</p> <ul style="list-style-type: none"> <li>&gt; Large Blocks 500+ = 0; Protected Land = 0</li> <li>&gt; Quarter Mile Segment Rivers = 5; Existing Trails = 5</li> <li>&gt; Natural Blocks: 150-500 = 5</li> <li>&gt; Quarter Mile Segment River = 8; Canals = 8</li> <li>&gt; Shoreline = 10</li> <li>&gt; Natural Blocks: 80-150 = 10,</li> <li>&gt; Natural Blocks: 30-80 = 15,</li> <li>&gt; Natural Landcover = 30</li> <li>&gt; Rural Roads = 50</li> </ul> <p>Impediments:</p> <ul style="list-style-type: none"> <li>&gt; Disturbed = 75; Low Development = 200; Urban Street = 750</li> <li>&gt; Minor Hiway = 500</li> <li>&gt; Major Hiway = 1000; Developed Land = 99999</li> </ul> <p>Modeled corridors were then ranked based on landcover, Natural = 5 (highest concern), Disturbed = 4, Low Development = 3, Developed = 2</p> <p>Model updated March 2014 for new zoning and roads.</p>	<p>Door County Zoning (wetlands areas) Cities where zoning data does not have wetland Information Wisconsin Wetland Inventory</p> <p>Landcover 2008</p> <p>Roads Streams Shoreline</p>	<p>Door County TPL Wisconsin Department of Natural Resources</p> <p>Door County</p> <p>Door County Door County Door County</p>	H