



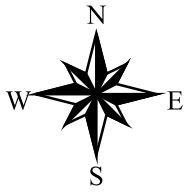
DOOR COUNTY

Door County Planning Dept.
421 Nebraska Street
Sturgeon Bay, WI 54235
(920) 746-2323
map.co.door.wi.us/planning

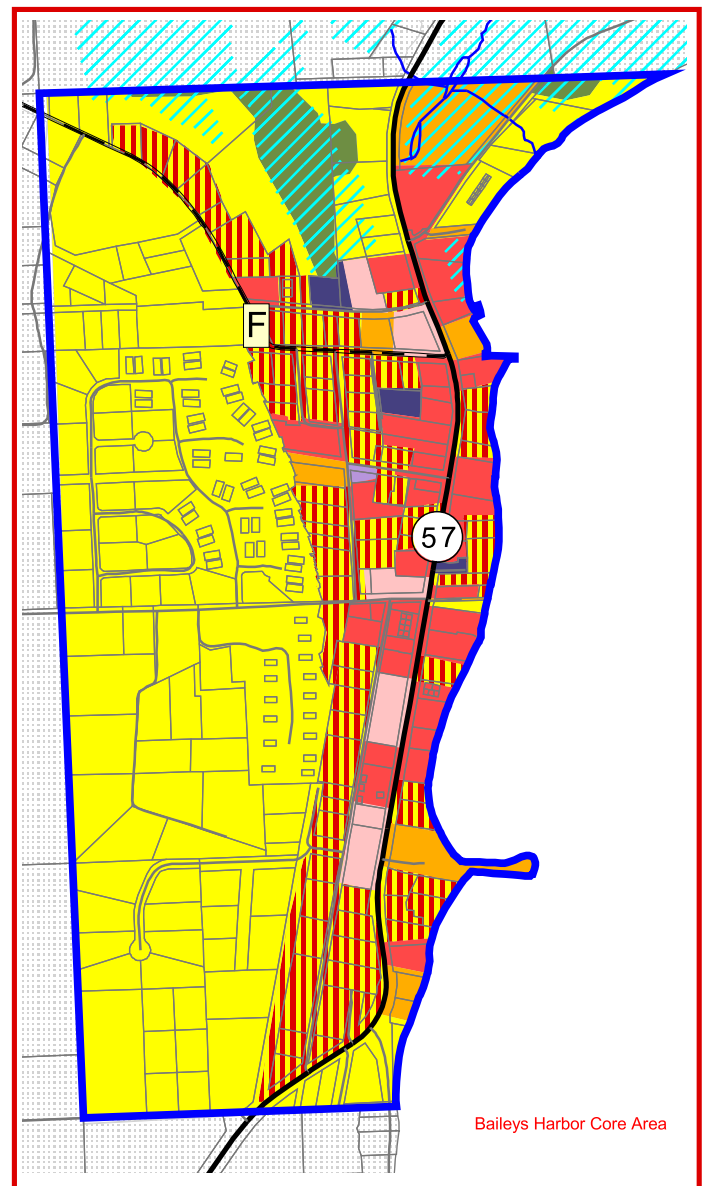
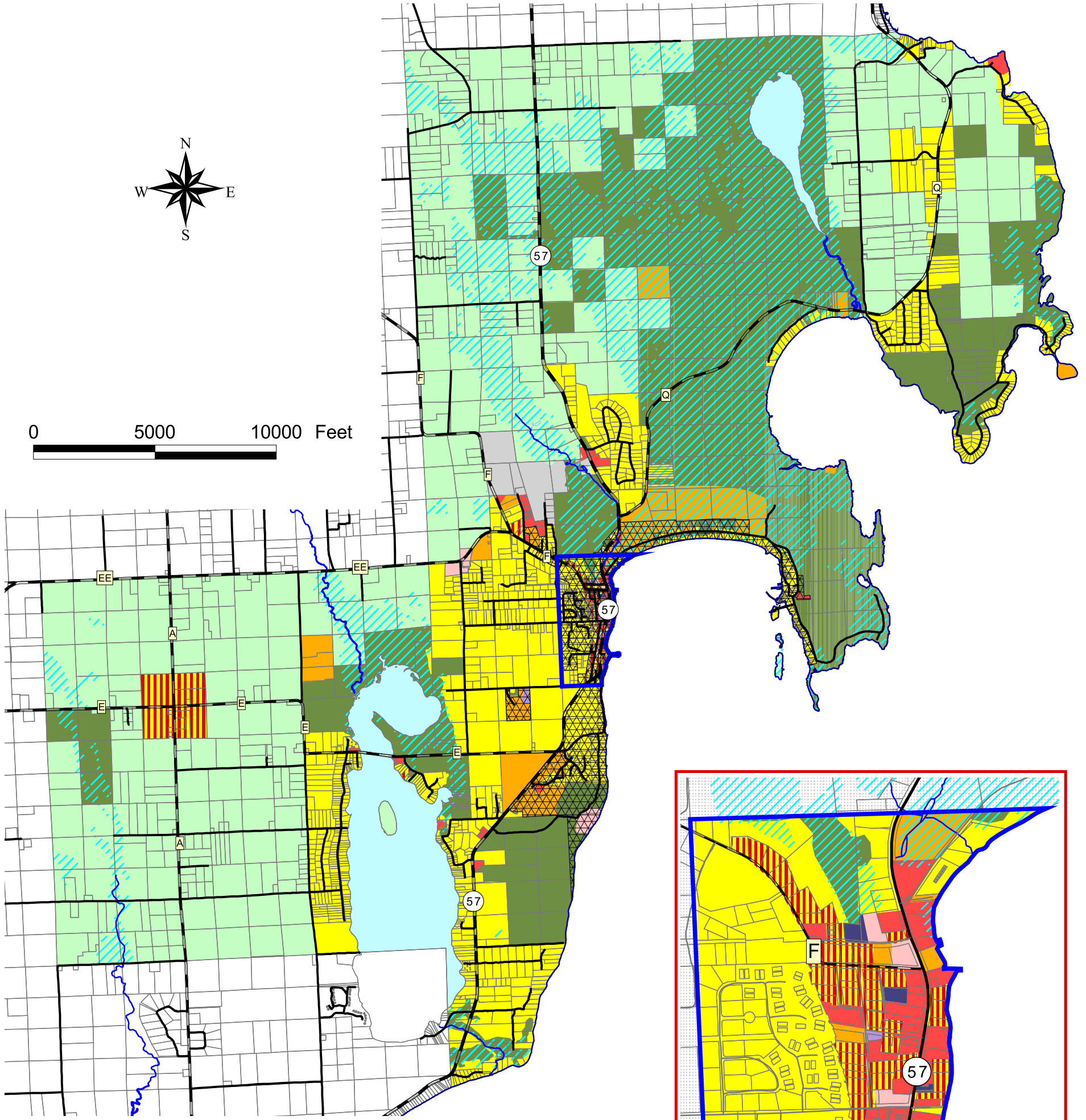
Door County Comprehensive and Farmland Preservation Plan 2035

Town of Baileys Harbor Future Land Use

Adopted by the Door County Board of Supervisors, December 16, 2014
Effective upon distribution per Wisconsin State Statutes, January 1, 2015



0 5000 10000 Feet



Future Land Use Categories	
Residential	Communications/Utilities
Rural Residential	Governmental/Institutional
Mixed Commercial/Residential	Parks and Recreation
Commercial	Rural/Agricultural
Industrial	Woodland/Wetland/Natural
Transportation	Core Area
Sewer Service Area	Road Class
Water Bodies	State Highway
Major Wetland Areas	County Highway
Streams	Local Road