

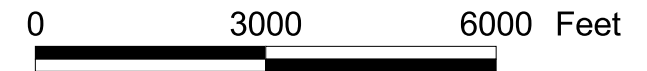
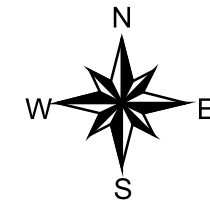
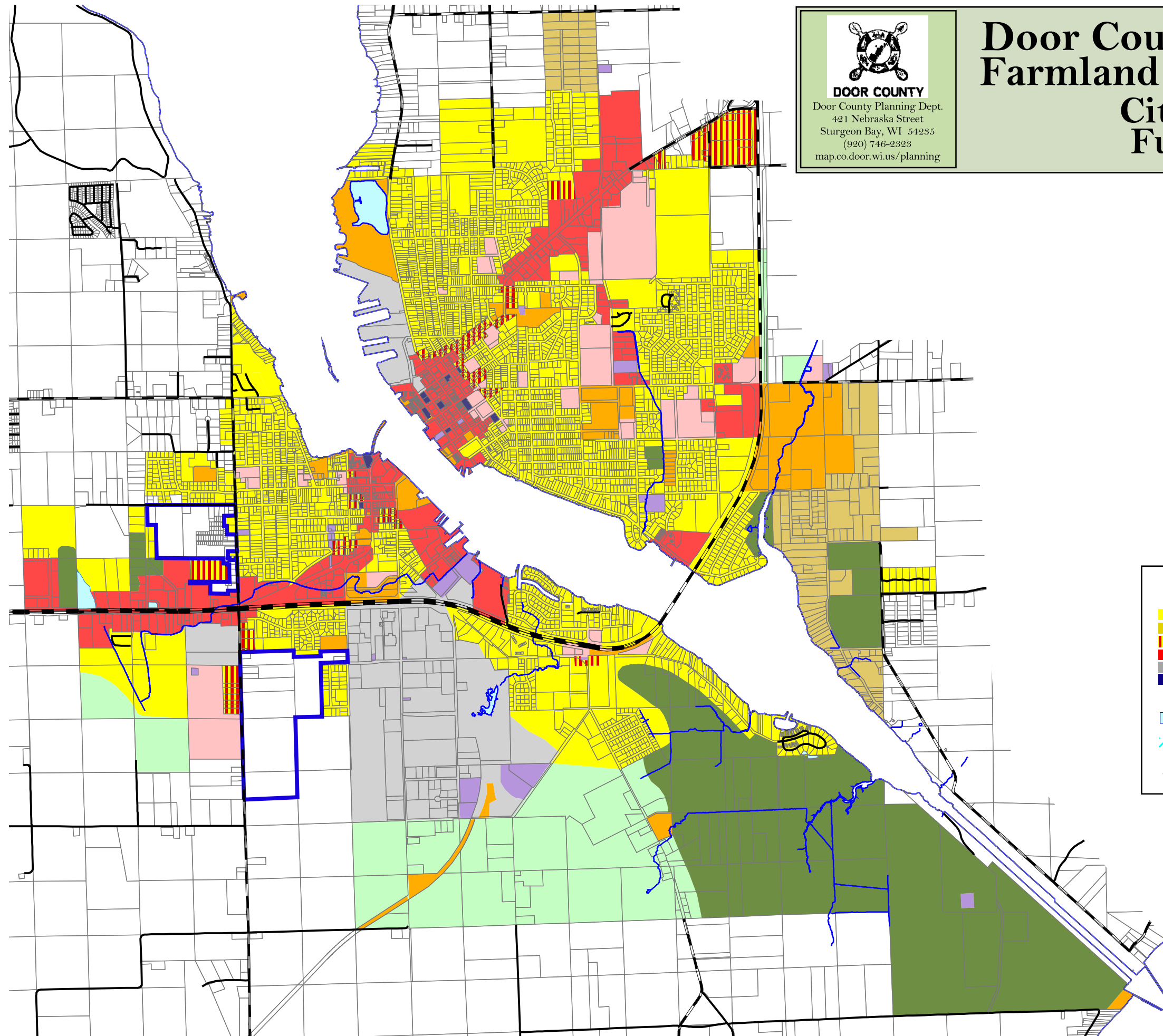


DOOR COUNTY

Door County Planning Dept.
421 Nebraska Street
Sturgeon Bay, WI 54235
(920) 746-2323
map.co.door.wi.us/planning

Door County Comprehensive and Farmland Preservation Plan 2035

City of Sturgeon Bay Future Land Use



Future Land Use Categories

Residential	Communications/Utilities
Rural Residential	Governmental/Institutional
Mixed Commercial/Residential	Parks and Recreation
Commercial	Rural/Agricultural
Industrial	Woodland/Wetland/Natural
Transportation	Core Area

Road Class

Water Bodies	State Highway
Major Wetland Areas	County Highway
Streams	Local Road