

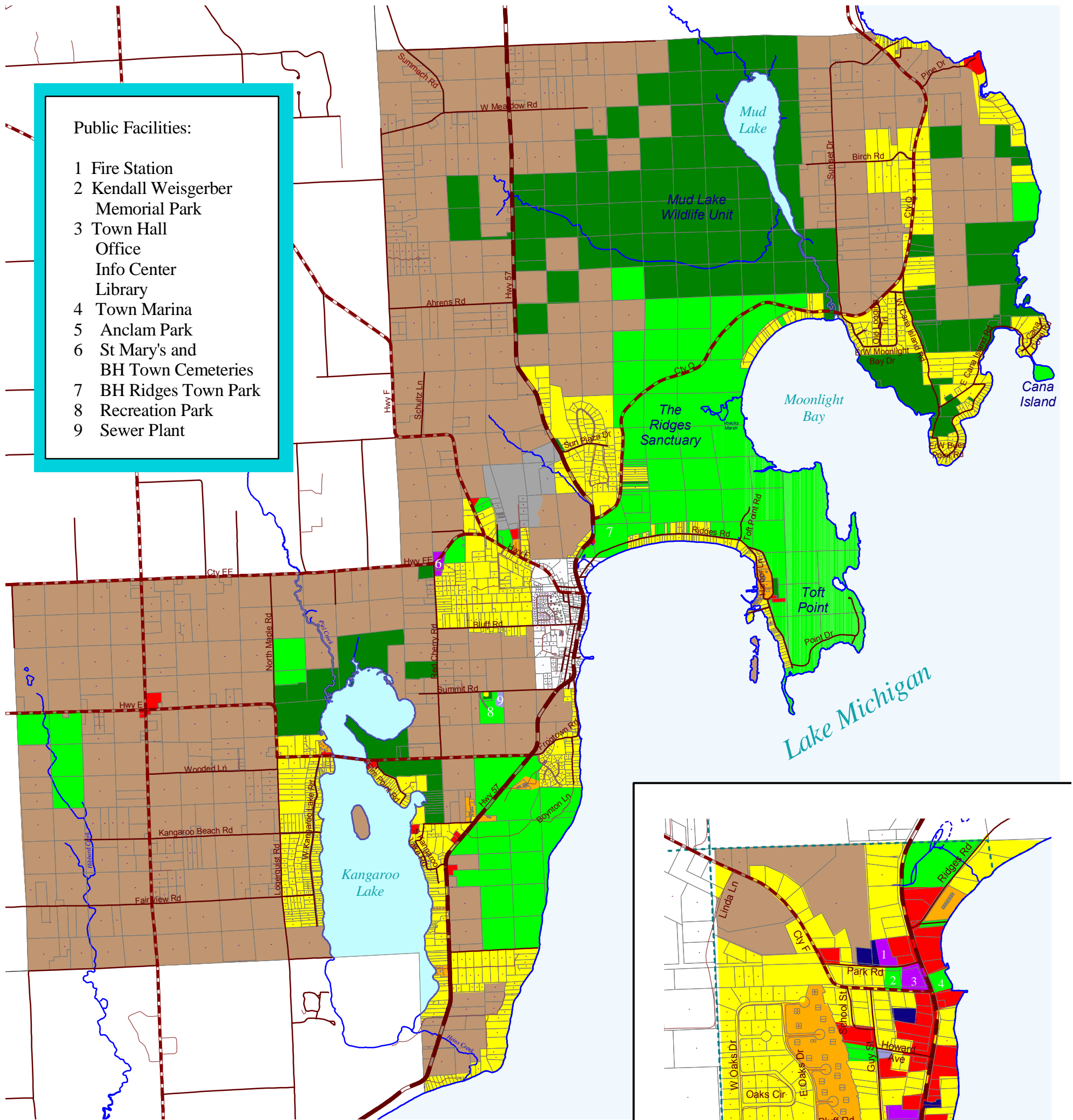
# TOWN OF BAILEYS HARBOR

## 2005 Land Use Inventory and Resources

Field checked 2004  
Electronically mapped 6/2005

2000 0 2000 4000 Feet

1" = 4250'



- Public Facilities:**
- 1 Fire Station
  - 2 Kendall Weisgerber Memorial Park
  - 3 Town Hall Office Info Center Library
  - 4 Town Marina
  - 5 Anclam Park
  - 6 St Mary's and BH Town Cemeteries
  - 7 BH Ridges Town Park
  - 8 Recreation Park
  - 9 Sewer Plant

**2005 Land Use Inventory**

	Residential		State Highway
	Multi-family Residential		County Highway
	Commercial		Town Road
	Industrial		Private Road or Street
	Transportation/Off-street Parking		Shared Driveway
	Communications/Utilities		Vacant property
	Governmental/Institutional		Tax Parcels
	Outdoor Recreation/Parks/Nature Study Areas		Streams
	Agricultural/Open Space		
	Water Features		
	Natural Areas and Wildlife Refuges		

