



Door County Planning Dept.
421 Nebraska Street
Sturgeon Bay, WI 54235
(920) 746-2323

Door County 2030 Comprehensive Plan

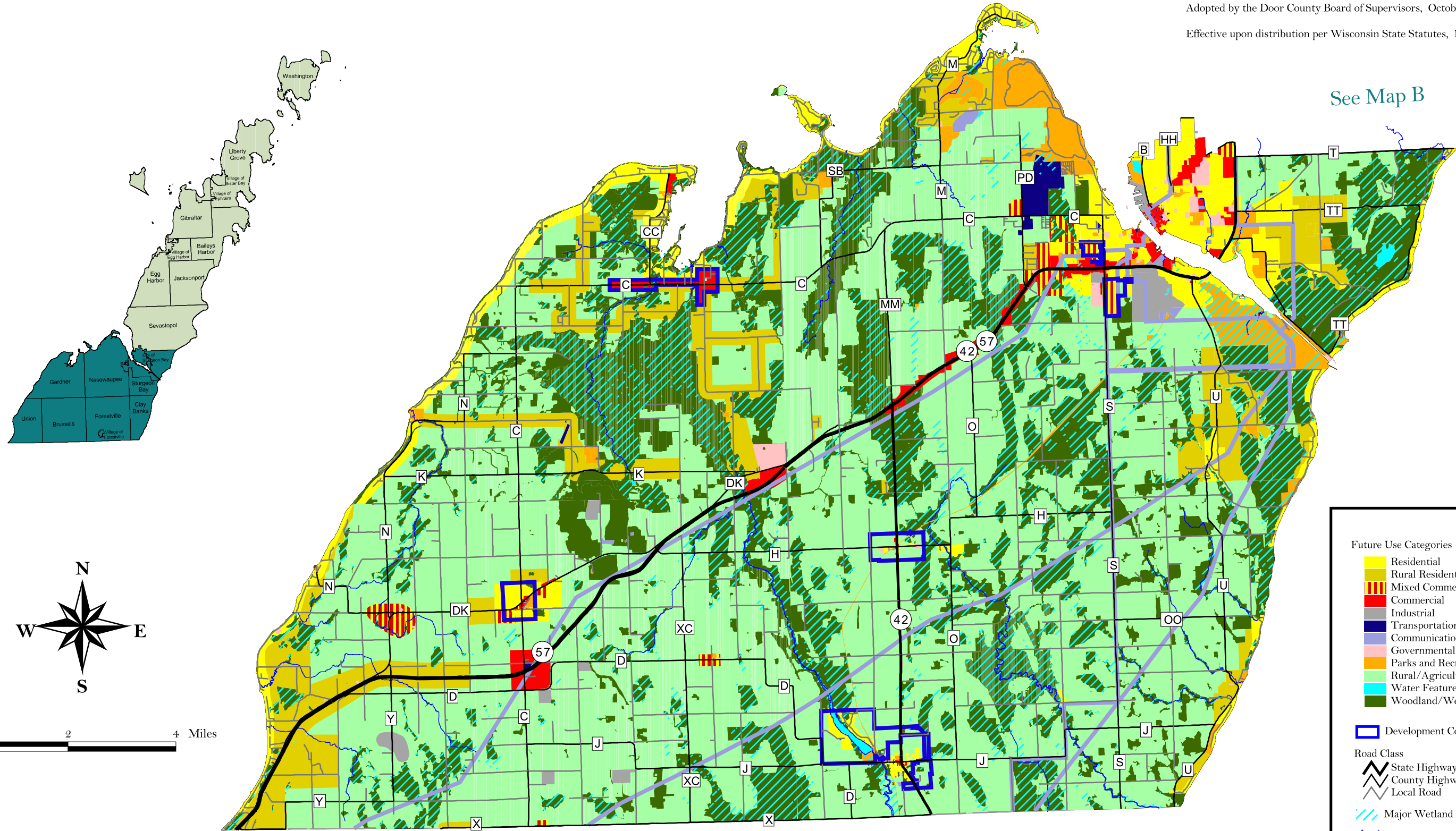
Map 9.1(A): Future Land Use-Southern Municipalities

NOTE: Larger-scale land use maps, including areas served by sewer, may be viewed at:

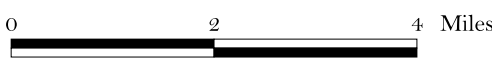
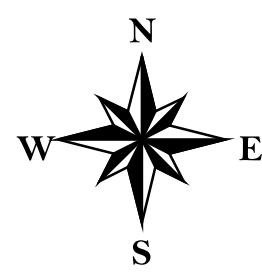
Door County Planning Department
421 Nebraska Street
Sturgeon Bay, WI

Adopted by the Door County Board of Supervisors, October 27, 2009

Effective upon distribution per Wisconsin State Statutes, November 6, 2009



See Map B



Future Use Categories

- Residential
- Rural Residential
- Mixed Commercial/Residential
- Commercial
- Industrial
- Transportation
- Communications/Utilities
- Governmental/Institutional
- Parks and Recreation
- Rural/Agricultural
- Water Features
- Woodland/Wetland/Natural

Development Core Areas

Road Class

- State Highway
- County Highway
- Local Road

Major Wetland Areas

Streams