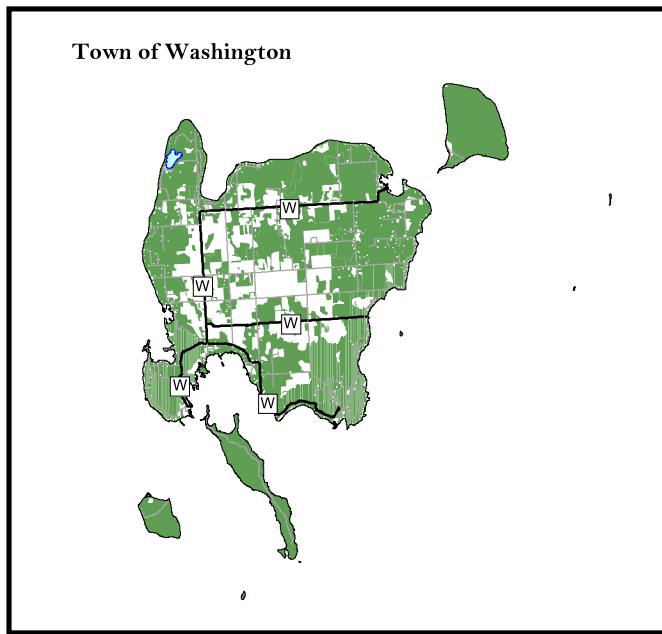




Door County Planning Dept.
421 Nebraska Street
Sturgeon Bay, WI 54235
(920) 746-2323

Door County 2030 Comprehensive Plan

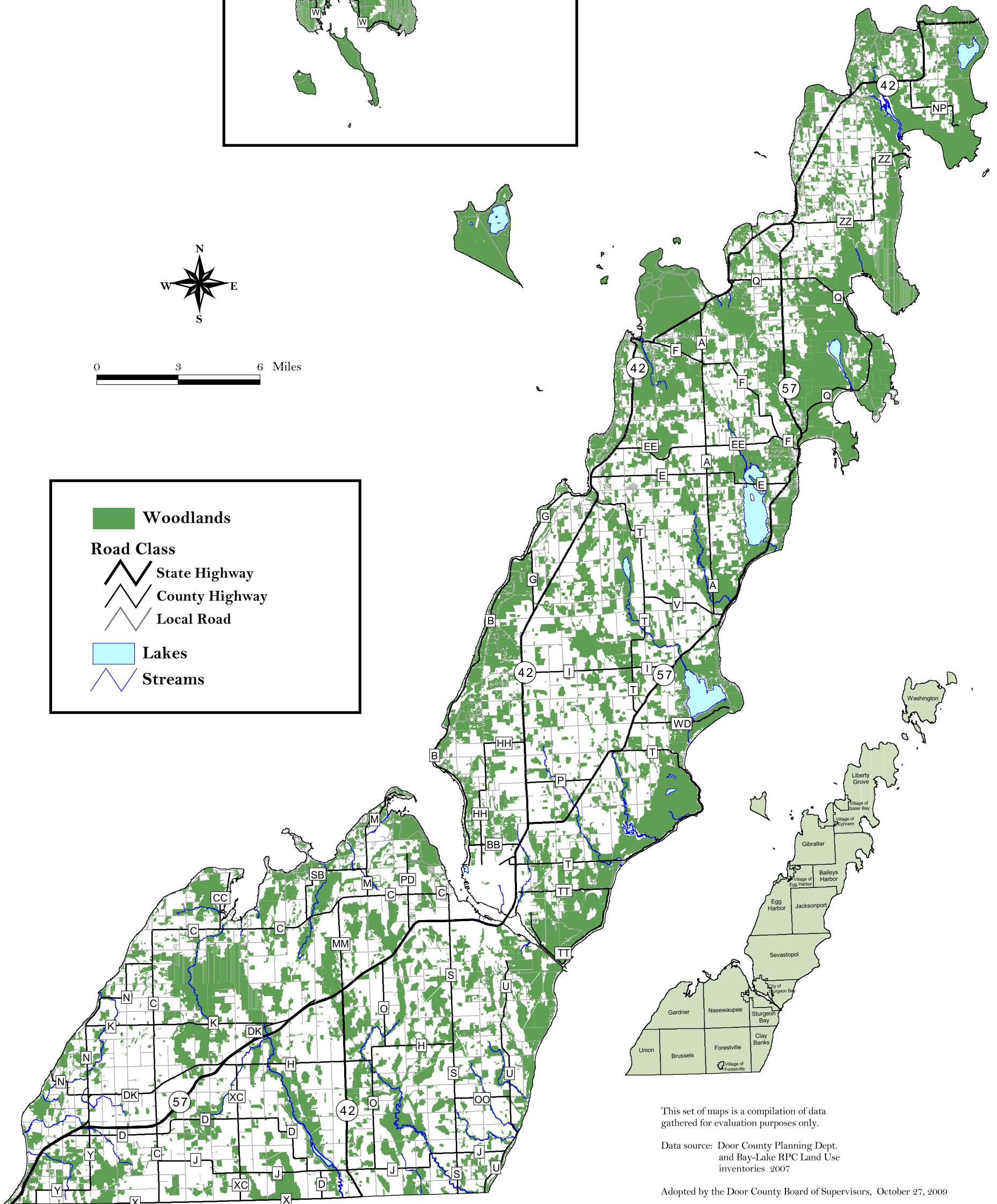
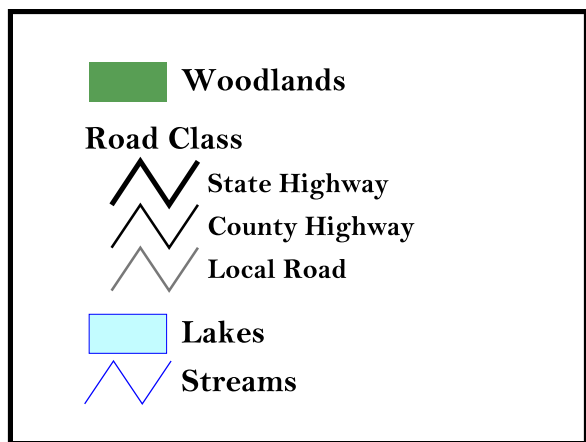
Map 4.7: Woodlands



See Town of Washington Inset



0 3 6 Miles



This set of maps is a compilation of data gathered for evaluation purposes only.

Data source: Door County Planning Dept. and Bay-Lake RPC Land Use inventories 2007

Adopted by the Door County Board of Supervisors, October 27, 2009

Effective upon distribution per Wisconsin State Statutes, November 6, 2009