

EXISTING CONDITIONS

- 19 advisories/closures 2003–2006
- High average E coli counts
 - Low, flat beach with fine sand provides large swash zone and prevents infiltration
 - Surface runoff from road and parking lot runs directly onto beach
 - Broken storm sewer pipe allows street runoff to overflow inlet onto parking lot
 - Storm sewer discharges directly onto beach

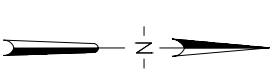
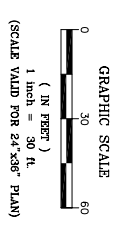
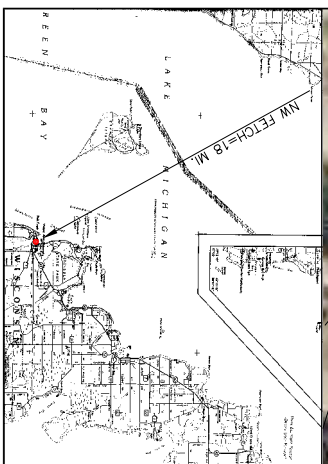


LEGEND

	PROPERTY LINE
	EXISTING CONTOURS (NGVD29 ELEV.)
	EXISTING SURFACE WATER FLOW
	STORM SEWER
	CURB INLET
	SOIL BORING

FISH CREEK TOWN BEACH

EXISTING CONDITIONS PLAN



NOTE: PROPERTY LINE, CONTOUR AND ORTHO PHOTO INFORMATION SHOWN HEREON IS APPROXIMATE, AND WAS TAKEN FROM DATA PROVIDED BY THE DOOR COUNTY SOIL AND WATER CONSERVATION DEPARTMENT.

NO.	DATE	DESCRIPTION
2	4/10/07	ISSUED FOR SWCD REVIEW
1	4/2/07	GENERAL EDITS

EXISTING CONDITIONS PLAN

MILLER ENGINEERS SCIENTISTS
An Employee Owned Company
5308 S. 12th Street
Sheboygan, WI 53081-6099
Phone 920-458-6164
Fax 920-458-0369
www.stortwithmiller.com

DOOR COUNTY
BEACH STORM WATER MANAGEMENT
FISH CREEK TOWN BEACH
FISH CREEK, WISCONSIN

SCALE	DATE	BY	SCJ	SHEET
HOR. 1"=30'	1-23-07	OK	SCJ	1 OF 2
VER.	1-23-07	OK	PGP	