



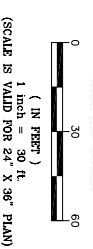
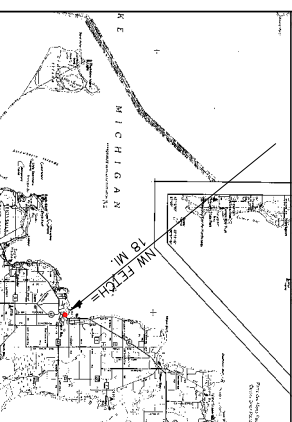
**EXISTING CONDITIONS**

- 11 advisories/closures 2003–2006
- Major events with high E coli counts
  - o Correlation with water temperature and wave height
  - o Fine beach sand prevents infiltration
  - o Storm sewer discharges directly onto beach
    - Vortech unit removes debris and sediment from storm water, but is rarely cleaned out
  - o Pier attracts birds and prevents water movement at beach

**LEGEND**

- PROPERTY LINE
- - - - - EXISTING CONTOURS (NGVD29 ELEV.)
- ST- ST- STORM SEWER
- VORTECHNICS UNIT
- ⊙ SOIL BORING

**SISTER BAY VILLAGE BEACH  
EXISTING CONDITIONS PLAN**



NOTE: PROPERTY LINE, CONTOUR AND ORTHO PHOTO INFORMATION SHOWN HEREON IS APPROXIMATE, AND WAS TAKEN FROM DATA PROVIDED BY THE DOOR COUNTY SOIL AND WATER CONSERVATION DEPARTMENT.

NO.	DATE	DESCRIPTION
2	4/11/07	ISSUED FOR SWCD REVIEW
1	4/2/07	TEXT AND LEGEND EDITS

**EXISTING CONDITIONS PLANS**

**MILLER ENGINEERS SCIENTISTS**  
 5308 S. 12th Street  
 Sheboygan, WI 53081-6099  
 Phone 920-458-6164  
 Fax 920-458-0369  
 www.stortwithmiller.com

**DOOR COUNTY**  
 BEACH STORM WATER MANAGEMENT  
 SISTER BAY VILLAGE BEACH  
 SISTER BAY, WISCONSIN

SCALE	DATE	BY	SCJ	SHEET
HOR. 1"=30'	2/15/07		SCJ	1
VER.	JOB #17326-A-SISTER BAY	OK	PGP	2